

CAREER TECHNICAL TRAINING AREA

Heavy Construction Equipment Mechanic



Do You Like ...

- ... solving problems?
- ... fixing things?
- ... working with large machines?
- ... organization and detail?

If so, you may be a good candidate for Job Corps' **Heavy Construction Equipment Mechanic** career training program.

SKILLS

Learn how to perform the essential tasks of a heavy construction equipment mechanic, including:

- » Understanding and using measuring tools and equipment.
- » Repairing and replacing damaged or worn parts in construction equipment, such as forklifts.
- » Dismantling and reassembling parts of heavy equipment using hoists and hand tools.
- » Understanding fuel, exhaust, cooling, electrical, and air intake systems.
- » Operating and inspecting machines or heavy equipment to diagnose defects.
- » Welding, cutting, brazing, and soldering.
- » Practicing safety on the job.

EXPECTATIONS & REQUIREMENTS

While on the job, you will be expected to display the following traits at all times:

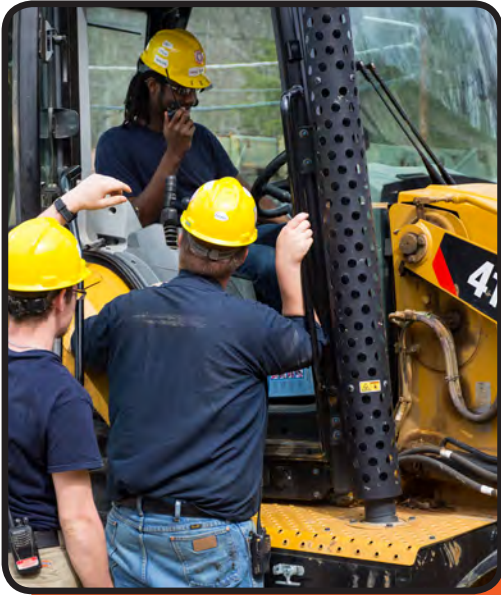
- » Integrity and dependability
- » Critical thinking
- » Attention to detail

And you will need to meet a few basic requirements in order to be hired as a heavy construction equipment mechanic, including having:

- » Strong math and reading skills
- » A high school diploma or the equivalent
- » Completion of the core curriculum and passing scores on all written and performance tests

CAREER TECHNICAL TRAINING AREA

Heavy Construction Equipment Mechanic



CREDENTIALS

As a Job Corps student, you can earn credentials in your training area that demonstrate you have **gained the knowledge and skills** to help you **succeed in your career**. Credentials may lead to greater employment opportunities, higher wages, and promotions.

Students who complete an Automotive and Machine Repair training area can earn **nationally recognized credentials** from organizations such as the National Institute of Automotive Service Excellence (ASE), the National Automotive Technicians Education Foundation (NATEF), and the United Automobile Workers (UAW). Credentials such as these prepare students for work in original equipment manufacturing (OEM) dealerships and aftermarket automotive machine shops.

CAREER OPTIONS

Most **Heavy Construction Equipment Mechanic graduates go to work for a construction company**. Equipment mechanics spend most of the day fixing large machines, which means you can expect to do some heavy lifting on the job. Most heavy construction equipment mechanics work full time, but some may be hired on a contract basis.

SALARY

The average starting salary for most heavy construction equipment mechanics is **\$49,000/year**.

*For additional salary information and career path options in this field, visit www.mynextmove.org.



recruiting.jobcorps.gov • mifuturo.jobcorps.gov (español)

   | dol.jobcorps